

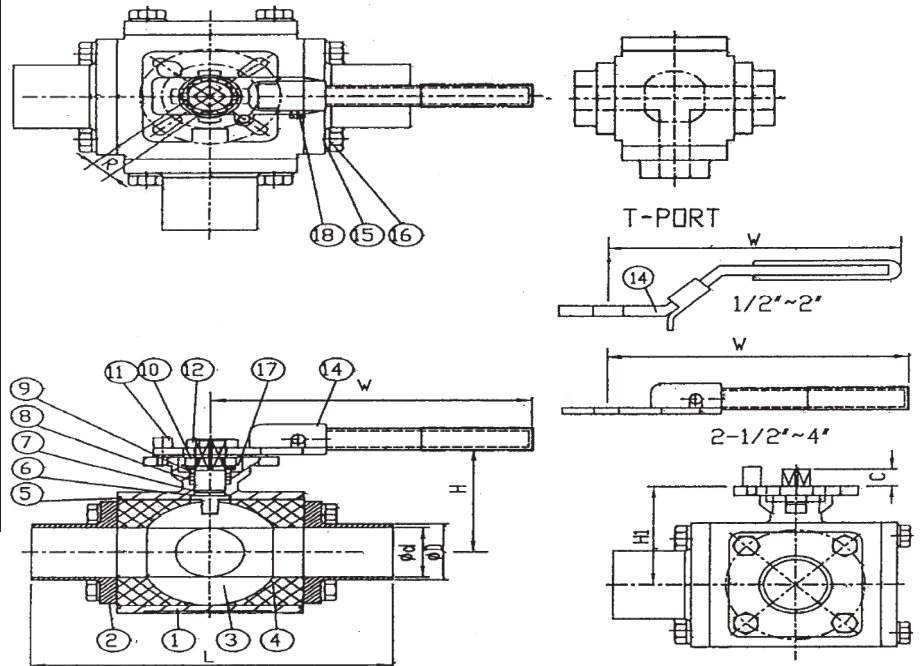
3 way Sanitary Ball Valve

No.	PART NAME	QTY	MATERIAL
1	Body	1	SS316
2	Cap	4	SS316
3	Ball	1	SS316
4	Seat	4	PTFE
5	Gasket	2	PTFE
6	Thrust Washer	1	PTFE
7	O-Ring	1	Viton
8	Stem Packing	1	PTFE
9	Ring	1	SS304
10	Bevel Washer	2	SS304
11	Stop Pin	1	SS316
12	Nut	2	SS304
13	Stem	1	SS316
14	Handle	1	SS304
15	Spring Washer	16	SS304
16	Bolt	1	SS304
17	Prevaling Device	1	SS304
18	Nut	1	SS304

Features

Investment Casting

- Blow-out Proof System Design
- Temperature range $-20^{\circ}\text{C} - 180^{\circ}\text{C}$
- End Type: Butt Weld End
- Material:
SS316/ EN10213 1.4408/ ASTM A-351 GR CF8M
- Option: Locking Device



SIZE		$\varnothing d$	$\varnothing D$	$\varnothing D1$	C	H	H1	L	W	R	ISO 5211	Toque In LBS
Inch	DN											
1/2"	DN 15	9.5	12.7	25.2	9	78	44.5	118	121	9	F03/F04	79
3/4"	DN 20	15.8	19.1	25.2	9	82	48	127	121	9	F03/F04	85
1"	DN 25	22.2	25.4	50.5	11	90	59	152.4	137	11	F04/F05	110
1.5"	DN 40	35.0	38.1	50.5	14	110	72	175	182	14	F05/F07	290
2"	DN 50	47.6	50.8	64	14	114.7	82	180	182	14	F05/F07	680
2.5"	DN 65	60.2	63.5	77.5	17	108	100	228	370	17	F07/F10	1060
3"	DN 80	73	76.2	91	23	134	125.5	260	400	22	F10/F12	1770
4"	DN 100	97.4	101.6	119	23	140	132.5	318	400	22	F10/F12	1900