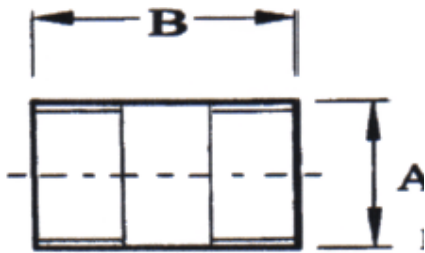


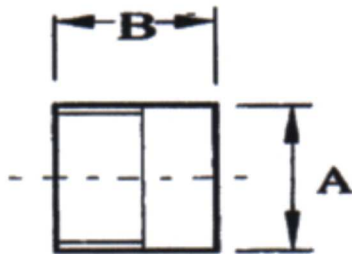
BSP 150lb Fittings

Barrel Nipple



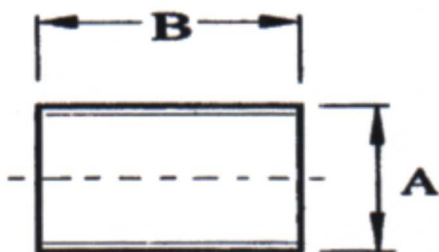
SIZE	DIM A	DIM B	Weight Kg/100	CODE
1/8"	10.2	30	30	S100-01
1/4"	13.5	40	30	S100-02
3/8"	17.2	40	40	S100-03
1/2"	21.3	60	60	S100-04
3/4"	26.9	60	60	S100-05
1"	33.7	60	60	S100-06
1 1/4"	42.4	70	80	S100-07
1 1/2"	48.3	72	80	S100-08
2"	60.3	82	100	S100-09
2 1/2"	76.1	100	120	S100-095
3"	88.9	106	120	S100-10
4"	114.3	120	138.1	S100-11

Welded Nipple



SIZE	DIM A	DIM B	Weight Kg/100	CODE
1/8"	10.2	30	1.1	S102-01
1/4"	13.5	30	1.7	S102-02
3/8"	17.2	30	2.5	S102-03
1/2"	21.3	35	3.8	S102-04
3/4"	26.9	40	6.2	S102-05
1"	33.7	50	8.8	S102-06
1 1/4"	42.4	50	15.0	S102-07
1 1/2"	48.3	50	16.8	S102-08
2"	60.3	50	21.7	S102-09
2 1/2"	76.1	60	31.0	S102-10
3"	88.9	70	64.5	S102-11
4"	114.3	80	104.4	S102-12

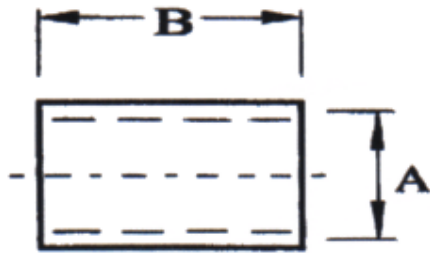
Running/Parallel Nipple



SIZE	DIM A	DIM B	Weight Kg/100	CODE
1/8"		*		S104-01
1/4"	13.5	18	0.6	S104-02
3/8"	17.2	22	0.9	S104-03
1/2"	21.3	25	1.8	S104-04
3/4"	26.9	30	2.7	S104-05
1"	33.7	35	4.3	S104-06
1 1/4"	42.4	38	6.5	S104-07
1 1/2"	48.3	38	6.6	S104-08
2"	60.3	45	11.9	S104-09
2 1/2"	76.1	55	19.1	S104-10
3"	88.9	60	26.4	*
4"	114.3	70	54.6	*

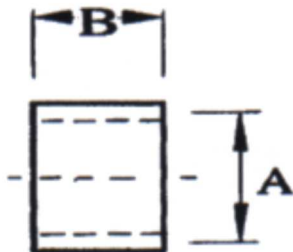
BSP 150lb Fittings

Full Socket



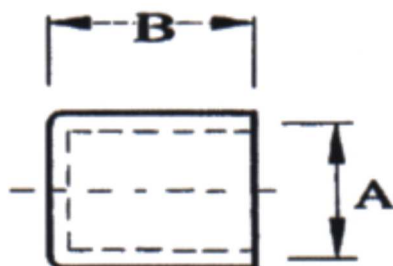
SIZE	DIM A	DIM B	Weight Kg/100	CODE
1/8"	14.0	17	1.0	S107-01
1/4"	18.5	25	2.2	S107-02
3/8"	21.3	26	3.2	S107-03
1/2"	26.4	34	6.3	S107-04
3/4"	31.8	35	8.3	S107-05
1"	39.5	43	15.2	S107-06
1 1/4"	48.3	46	20.6	S107-07
1 1/2"	54.5	48	25.3	S107-08
2"	66.3	56	36.2	S107-09
2 1/4"	76.2	38	39.4	S107-090
2 1/2"	82.0	65	47.4	S107-095
3"	95.0	71	66.1	S1007-10
4"	122	83	124.2	S1007-11

Half Socket



SIZE	DIM A	DIM B	Weight Kg/100	CODE
1/8"	14.0	7	0.39	S108-01
1/4"	18.5	11	0.94	S108-02
3/8"	21.3	12	1.5	S108-03
1/2"	26.4	15	2.7	S108-04
3/4"	31.8	16	3.8	S108-05
1"	39.5	20	6.1	S108-06
1 1/4"	48.3	22	9.3	S108-07
1 1/2"	54.5	22	11.6	S108-08
2"	66.3	26	16.3	S108-09
2 1/2"	82.0	30	22.3	S108-090
3"	95.0	33	31.1	S108-10
4"	122	39	53.1	S108-11

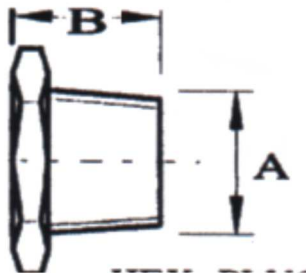
Round Cap



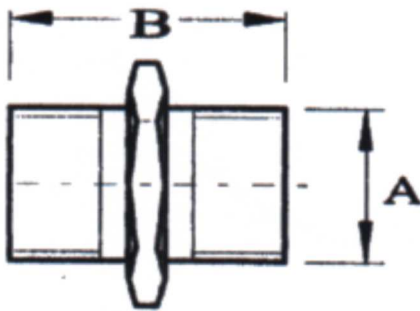
SIZE	DIM A	DIM B	Weight Kg/100	CODE
1/8"	18	15	1.7	S109-01
1/4"	21	17	2.9	S109-02
3/8"	24	17	3.6	S109-03
1/2"	27	19	4.3	S109-04
3/4"	35	24	11.7	S109-05
1"	42	29	11.4	S109-06
1 1/4"	52	32	17.6	S109-07
1 1/2"	58	34	22.5	S109-08
2"	69	38	36.1	S109-09
2 1/2"	91	43	47.0	S109-095
3"	106	48	80.3	S109-10
4"	133	53	133.8	S109-11

BSP 150lb Fittings

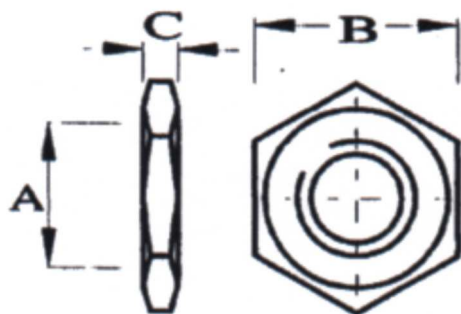
HEX Plug



HEX Nipple



Hex Back Nut



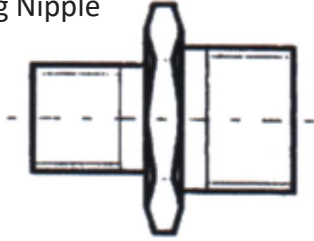
SIZE	DIM A	DIM B	Weight Kg/100	CODE
1/8"	12	17	1.1	S106-01
1/4"	16	18	1.9	S106-02
3/8"	20	18	3.4	S106-03
1/2"	24	25	4.4	S106-04
3/4"	30	26	6.4	S106-05
1"	38	29	9.4	S106-06
1 1/4"	46	35	16.6	S106-07
1 1/2"	52	38	20.2	S106-08
2"	65	39	32.7	S106-09
2 1/2"	81	44	66.8	S106-10
3"	94	54	82.4	S106-11
4"	119	55	127.5	S106-12

SIZE	DIM A	DIM B	Weight Kg/100	CODE
1/8"	12	12	1.6	S103-01
1/4"	16	16	2.2	S103-02
3/8"	19	19	4.0	S103-03
1/2"	22	22	7.0	S103-04
3/4"	30	30	8.9	S103-05
1"	36	36	14.1	S103-06
1 1/4"	46	46	20.9	S103-07
1 1/2"	50	50	30.0	S103-08
2"	66	66	41.7	S103-09
2 1/2"	80	80	75.4	S103-10
3"	90	90	89.6	S103-11
4"	120	120	133.8	S103-12

SIZE	DIM A	DIM B	DIM C	CODE
1/8"	14	6	7.1	S105-01
1/4"	23	7	7.5	S105-02
3/8"	26	8	7.7	S105-03
1/2"	31	10	8.5	S105-04
3/4"	37	11	9.8	S105-05
1"	46	10	10.5	S105-06
1 1/4"	55	11	11.7	S105-07
1 1/2"	63	12	12.6	S105-08
2"	76	13	14.2	S105-09
2 1/2"	95	16	17	S105-10
3"	105	19	20	S105-11
4"	131	20	22.9	S105-12

BSP 150lb Fittings

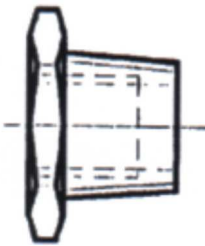
Reducing Nipple



SIZE	DIM A	CODE
1/4 x 1/8"	18	S114-01
3/8 x 1/4"	21	S114-02
1/2 x 3/8"	26	S114-03
1/2 x 1/4"	26	S114-031
3/4 x 3/8"	30	S114-042
3/4 x 1/2"	30	S114-04
1 x 1/2"	35	S114-053

SIZE	DIM A	CODE
1 x 3/4"	37	S114-05
1 1/4 x 3/4"	46	S114-064
1 1/4 x 1.0"	46	S114-06
1 1/2 x 3/4"	50	S114-075
1 1/2" x 1"	50	S114-07
2" x 3/4"	63	S114-08
2" x 1"	63	S114-085

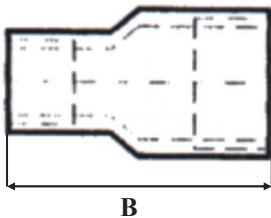
Reducing Hex



SIZE	DIM A	CODE
1/4 x 1/8"	16	S115-01
3/8 x 1/8"	18	S115-015
3/8 x 1/4"	18	S115-02
1/2 x 1/8"	26	S115-021
1/2 x 3/8"	26	S115-03
1/2 x 1/4"	26	S115-031
3/4 x 3/8"	30	S115-04
3/4 x 1/2"	30	S115-041
1 x 1/4"	35	S115-045
1 x 3/4"	35	S115-05
1 x 1/2"	35	S115-053

SIZE	DIM A	CODE
1 1/4 x 1"	45	S115-06
1 1/4 x 3/4"	45	S115-064
1 1/2 x 1 1/4"	52	S115-07
1 1/2 x 3/4"	52	S115-074
1 1/2 x 1.0"	52	S115-075
2 x 1"	63	S115-08
2 x 1 1/4"	63	S115-086
2 x 1 1/2"	63	S115-095
2 1/2 x 2"	81	S115-10
3 x 2"	95	S115-15

Reducing Socket

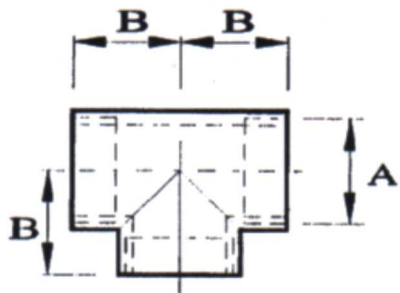


SIZE	DIM A	DIM B	Weight Kg/100	CODE
1/4 x 1/8"	22	26	3.3	S116-01
3/8 x 1/8"	23	30	4.5	S116-010
3/8 x 1/4"	26	29	4.9	S116-02
1/2 x 1/8"	29	34	5.1	S116-020
1/2 x 1/4"	30	33	5.5	S116-031
1/2 x 3/8"	30	34	6.9	S116-03
3/4 x 1/4"	37	35	8.2	S116-039
3/4 x 3/8"	37	37	11.4	S116-042
3/4 x 1/2"	37	37	10.9	S116-04
1 x 1/4"	44	42	12.8	S116-048
1 x 3/8"	44	42	14.5	S116-049
1 x 1/2"	44	43	13.4	S116-053
1 x 3/4"	44	43	12.9	S116-05
1 1/4 x 1/2"	53	48	16.3	S116-059
1 1/4 x 3/4"	53	48	16.7	S116-064
1 1/4 x 1"	53	52	22.3	S116-06
1 1/2 x 1/2"	59	51	24.0	S116-073

SIZE	DIM A	DIM B	Weight Kg/100	CODE
1 1/2 x 3/4"	59	49	22.4	S116-074
1 1/2 x 1"	59	53	30.7	S116-075
1 1/2 x 1 1/4"	59	53	38.7	S116-07
2 x 1/2"	72	51	34.0	S116-83
2 x 3/4"	72	51	33.1	S116-84
2 x 1"	72	56	30.5	S116-085
2 x 1 1/4"	72	56	38.4	S116-86
2 x 1 1/2"	72	57	37.0	S116-08
2 1/2 x 1 1/2"	87	60	75.0	S116-88
2 1/2 x 2"	87	61	78.4	S116-89
3 x 1/2"	99	62	73.8	*
3 x 2"	99	62	93.1	S116-91
3 x 2 1/2"	99	62	75.9	S116-92
4 x 2"	128	65	176.3	S116-93
4 x 2 1/2"	128	65	150.0	S116-94
4 x 3"	128	65	131.7	S116-95

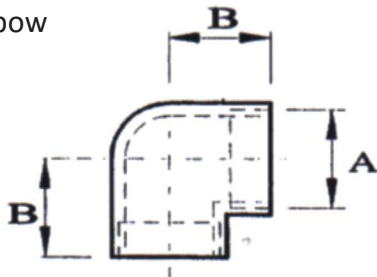
BSP 150lb Fittings

Equal Tee



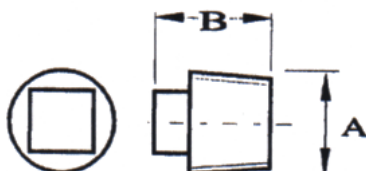
SIZE	DIM A	DIM B	CODE
1/8"	18	18	S112-01
1/4"	21	18	S112-02
3/8"	24	21	S112-03
1/2"	29	27	S112-04
3/4"	35	33	S112-05
1"	43	40	S112-06
1 1/4"	52	46	S112-07
1 1/2"	58	52	S112-08
2"	71	65	S112-09

Elbow



SIZE	DIM A	DIM B	CODE
1/8"	18	18	S111-01
1/4"	21	18	S111-02
3/8"	24	21	S111-03
1/2"	29	27	S111-04
3/4"	35	33	S111-05
1"	43	40	S111-06
1 1/4"	52	46	S111-07
1 1/2"	58	52	S111-08
2"	71	65	S111-09

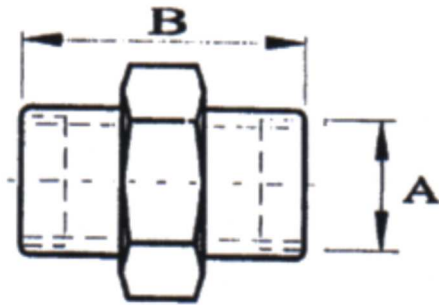
SQ. Head Plug



SIZE	DIM A	DIM B	Weight Kg/100	CODE
1/8"	6	19	0.5	S110-01
1/4"	9	20	1.4	S110-02
3/8"	11	22	2.0	S110-03
1/2"	13	25	3.5	S110-04
3/4"	16	27	5.7	S110-05
1"	20	32	10.3	S110-06
1 1/4"	24	35	14.1	S110-07
1 1/2"	25	37	17.1	S110-08
2"	32	38	30.6	S110-09
2 1/2"	42	48	35.9	S110-10
3"	46	52	55.0	S110-11
4"	58	62	105.5	S110-12

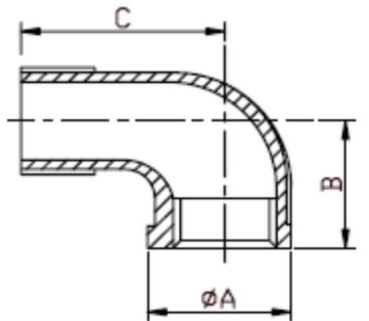
BSP 150lb Fittings

HEX. Socket Union Female/Female



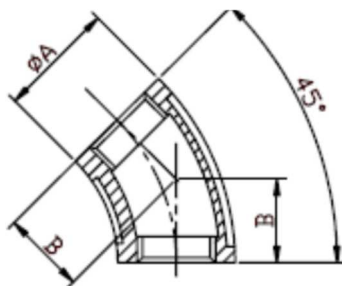
SIZE	DIM A	DIM B	CODE
1/8"	25	35	S113-01
1/4"	30	37	S113-02
3/8"	35	41	S113-03
1/2"	42	48	S113-04
3/4"	47	51	S113-05
1"	53	57	S113-06
1 1/4"	71	64	S113-07
1 1/2"	78	71	S113-08
2"	92	78	S113-09

Street 90° Bend



SIZE	DIM A	DIM B	DIM C	Weight Kg/100
1/8"	15	19	26	3.0
1/4"	18	19	28	5.6
3/8"	23	23	35	5.8
1/2"	29	29	42	12.0
3/4"	35	33	51	14.8
1"	43	38	52	23.6
1 1/4"	52	45	60	36.2
1 1/2"	58	50	65	42.3
2"	71	58	74	68.5
2 1/2"	84	68	100	121.5
3"	96	78	116	180.9
4"	121	97	147	446.8

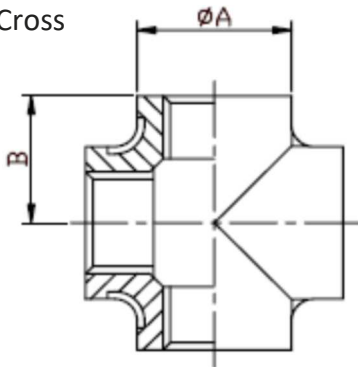
45° Bend



SIZE	DIM A	DIM B	Weight Kg/100
1/8"	18	18	3.0
1/4"	21	19	5.5
3/8"	26	21	8.2
1/2"	31	22	10.9
3/4"	37	25	13.7
1"	45	31	23.2
1 1/4"	55	33	36.8
1 1/2"	62	37	46.9
2"	75	43	70.5
2 1/2"	87	49	86.0
3"	99	54	119.1
4"	125	65	267.6

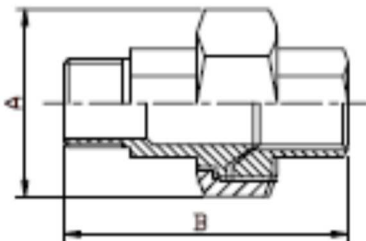
BSP 150lb Fittings

Cross



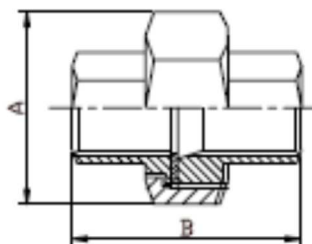
SIZE	DIM A	DIM B	Weight Kg/100
1/8"	15	17	7.5
1/4"	20	19	9.8
3/8"	23	23	9.9
1/2"	28	27	15.0
3/4"	35	32	21.9
1"	44	38	35.3
1 1/4"	53	46	53.1
1 1/2"	58	48	64.3
2"	71	56	95.5
2 1/2"	87	69	234.4
3"	99	78	371.2
4"	125	97	580.0

Union Conical Male/Female



SIZE	DIM A	DIM B	Weight Kg/100
1/8"	25	40	8.8
1/4"	30	50	8.9
3/8"	35	50	13.9
1/2"	42	57	16.2
3/4"	47	66	31.8
1"	53	68	39.6
1 1/4"	71	83	59.8
1 1/2"	78	86	83.6
2"	92	94	119.3

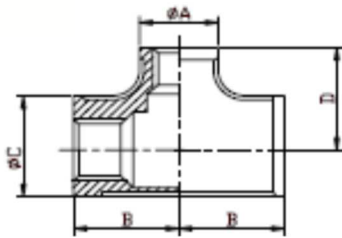
Union Flat Seat Female/Female
Teflon Gasket



SIZE	DIM A	DIM B	Weight Kg/100
1/8"	25	29	8.5
1/4"	30	38	7.6
3/8"	35	38	9.8
1/2"	42	41	14.1
3/4"	47	48	21.9
1"	53	50	41.2
1 1/4"	71	59	48.8
1 1/2"	78	64	71.2
2"	92	69	98.6

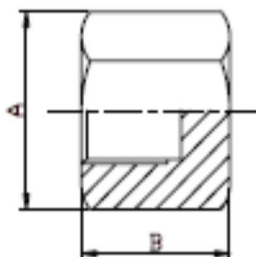
BSP 150lb Fittings

Reducing Tees



SIZE	DIM A	DIM B	DIM C	DIM D	Weight Kg/100
1/4" x 1/8"	18.0	17	18.0	17	5.0
3/8" x 1/4"	18.0	21	23.5	21	9.7
1/2" x 1/4"	20.8	24	28.8	24	12.1
1/2" x 3/8"	23.3	26	28.8	25	11.9
3/4" x 3/8"	23.3	28	35.8	28	19.2
3/4" x 1/2"	30.0	30	37.0	31	18.9
1" x 1/2"	30.5	32	44.0	33	31.9
1" x 3/4"	35.8	34	43.3	35	31.5
1 1/4" x 3/4"	35.8	38	51.4	40	46.8
1 1/4" x 1"	43.3	40	51.4	42	46.2
1 1/2" x 3/4"	35.8	38	57.9	43	57.9
1 1/2" x 1"	43.3	41	57.9	45	57.5
1 1/2" x 1 1/4"	28.8	45	70.6	48	56.9
2" x 3/4"	35.8	41	70.6	49	82.0
2" x 1"	43.3	44	70.6	51	81.9
2" x 1 1/4"	51.4	48	70.6	54	81.5
2 x 1 1/2"	57.9	52	70.6	55	81.2

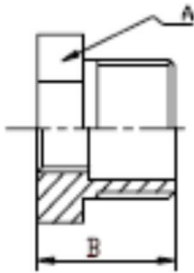
Hex Cap



SIZE	DIM A	DIM B	Weight Kg/100
1/8"	45	13	1.6
1/4"	18	17	2.2
3/8"	21	19	4.3
1/2"	27	20	6.1
3/4"	30	24	9.4
1"	38	25	13.0
1 1/4"	50	28	23.0
1 1/2"	55	28	28.5
2"	70	34	55.9
2 1/2"	92	40	86.1
3"	109	45	108.4
4"	132	50	198.1

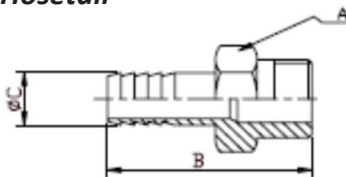
BSP 150lb Fittings

Reducing Bush



SIZE	DIM A	DIM B	Weight Kg/100	SIZE	DIM A	DIM B	Weight Kg/100
1/4" x 1/8"	16	15	1.2	1 1/2" x 1/2"	52	36	23.2
3/8" x 1/8"	18	17	2.4	1 1/2" x 3/4"	52	36	22.6
3/8" x 1/4"	18	17	1.8	1 1/2" x 1"	52	36	20.3
1/2" x 1/8"	26	21	4.3	1 1/2" x 1 1/4"	52	36	14.0
1/2" x 1/4"	26	21	3.8	2" x 1/2"	63	36	38.8
1/2" x 3/8"	26	21	2.3	2" x 3/4"	63	36	44.5
3/4" x 1/4"	30	24	6.7	2" x 1"	63	36	38.6
3/4" x 3/8"	30	24	6.1	2 x 1 1/4"	63	36	34.4
3/4" x 1/2"	30	24	5.2	2" x 1 1/2"	63	36	29.3
1" x 1/4"	35	27	10.5	2 1/2" x 1 1/2"	81	45	65.4
1" x 3/8"	35	27	10.5	2 1/2" x 2"	81	45	51.0
1" x 1/2"	35	27	9.0	3 x 1 1/2"	95	47	97.2
1" x 3/4"	35	27	7.8	3" x 2"	95	47	85.5
1 1/4" x 3/8"	45	30	16.6	3" x 2 1/2"	95	47	71.8
1 1/4" x 1/2"	45	30	18.6	4" x 2"	119	52	178.2
1 1/4" x 3/4"	45	30	17.9	4" x 2 1/2"	119	52	160.5
1 1/4" x 1"	45	30	12.8	4" x 3"	119	52	121.8

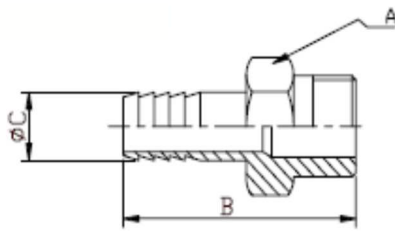
Hosetail



SIZE	Size C Hose	DIM A	DIM B	Weight Kg/100
1/8"	6.30	17	47	2.8
1/4"	8.00	17	47	3.1
3/8"	9.50	20	55	4.5
1/2"	12.70	24	64	6.7
3/4"	19.05	31	68	12.2
1"	25.40	39	71	17.4
1 1/4"	31.80	46	80	30.5
1 1/2"	38.10	52	95	38.9
2"	50.80	62	105	62.7
2 1/2"	63.50	80	107	104.6
3"	76.20	91	112	158.0
4"	101.60	117	130	215.0

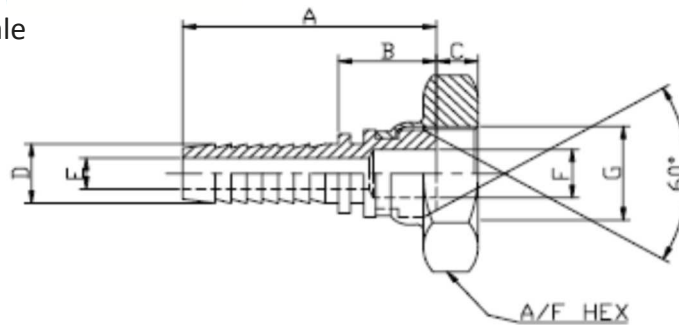
BSP 150lb Fittings

Reducing Hosetail



SIZE	SIZE C HOSE	DIM A	DIM B	Weight Kg/100
1/8"	6.30	13	45	3.0
1/4"	9.50	17	47	4.2
1/4"	12.70	17	47	6.2
3/8"	12.70	20	55	6.5
1/2"	19.05	31	68	11.5
3/4"	25.40	39	71	16.5

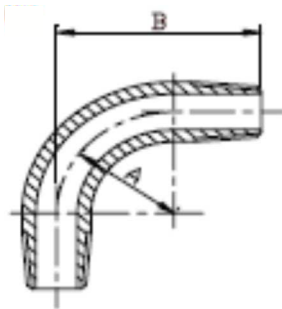
Hosetail Female



HOSE D	G BSPP	DIM A	DIM B	DIM C	DIM E	DIM F	A/F	Weight Kg/100
1/4"	1/4"	45.5	18.0	4.3	4.5	4.5	18.0	5
3/8"	3/8"	51.3	21.7	4.8	7.2	7.2	25.7	7
1/2"	1/2"	52.8	21.7	7.1	9.5	9.5	25.7	10
3/4"	3/4"	64.2	25.9	8.4	15.1	15.1	31.8	17
1"	1"	74.8	28.3	9.4	20.6	20.6	38.1	22
1 1/4"	1 1/4"	84.0	30.1	10.7	27.0	27.0	47.2	40
1 1/2"	1 1/2"	92.7	35.6	11.9	32.5	32.5	56.4	48
2"	2"	111.0	38.0	12.9	44.3	44.3	69.9	69

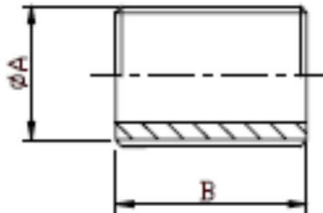
BSP 150lb Fittings

Male 90° Bend



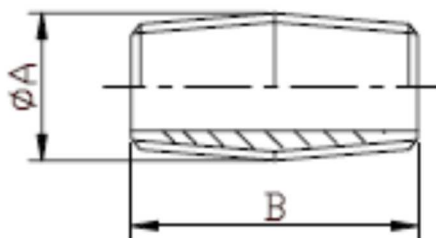
SIZE	DIM A	DIM B	Weight Kg/100
1/4"	31.8	60	6.4
3/8"	38.1	70	10.2
1/2"	44.5	80	16.8
3/4"	57.2	100	24.4
1"	76.2	120	44.9
1 1/4"	88.9	140	87.9
1 1/2"	108.0	160	88.8
2"	152.4	190	148.9
2 1/2"	228.6	240	400.0
3"	304.8	290	530.0

Parallel Nipple



SIZE	DIM A	DIM B	Weight Kg/100
1/4"	13.5	18	0.6
3/8"	17.2	22	0.9
1/2"	21.3	25	1.8
3/4"	26.9	30	2.7
1"	33.7	35	4.3
1 1/4"	42.4	38	6.5
1 1/2"	48.3	38	6.6
2"	60.3	45	11.9
2 1/2"	76.1	55	19.1
3"	88.9	60	26.4
4"	114.3	70	54.6

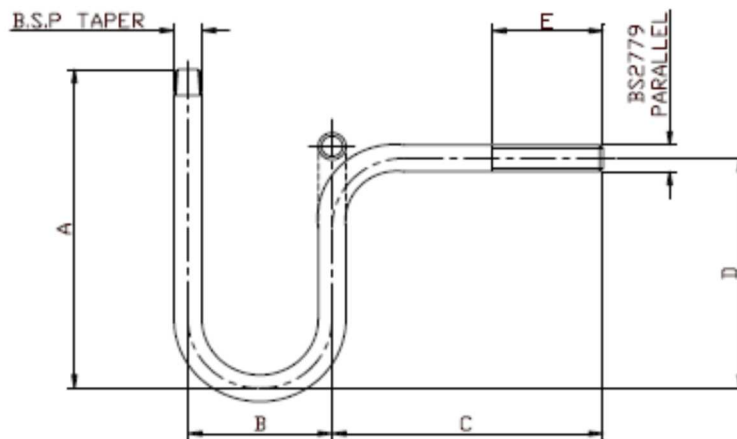
Close Taper Nipple



SIZE	DIM A	DIM B	Weight Kg/100
1/4"	13.5	24	1.1
3/8"	17.2	25	1.9
1/2"	21.3	29	2.4
3/4"	26.9	32	4.2
1"	33.7	38	8.2
1 1/4"	42.4	38	12.4
1 1/2"	48.3	44	13.4
2"	60.3	44	19.5
M	76.1	57	60.4
3"	88.9	64	63.4
4"	114.3	76	84.9

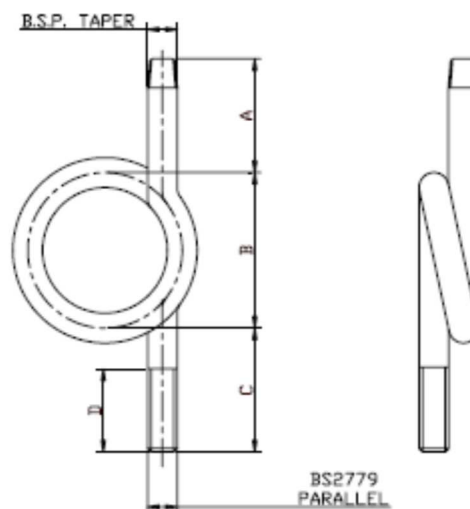
BSP 150lb Fittings

U-Syphon



SIZE	DIM A	DIM B	DIM C	DIM D	DIM E	Weight Kg/100
1/4"	154.5	68.5	86.0	132.0	38.5	25.0
3/8"	163.0	73.0	94.5	136.5	40.0	36.2
1/2"	210.5	91.5	124.0	174.5	55.0	69.2

Ring Syphon



SIZE	DIM A	DIM B	DIM C	DIM D	Weight Kg/100
1/4"	69.5	91	91.5	38.5	34.1
3/8"	86.0	99	112.0	40.0	53.2
1/2"	104.0	100	127.0	55.0	84.4